



## Topics

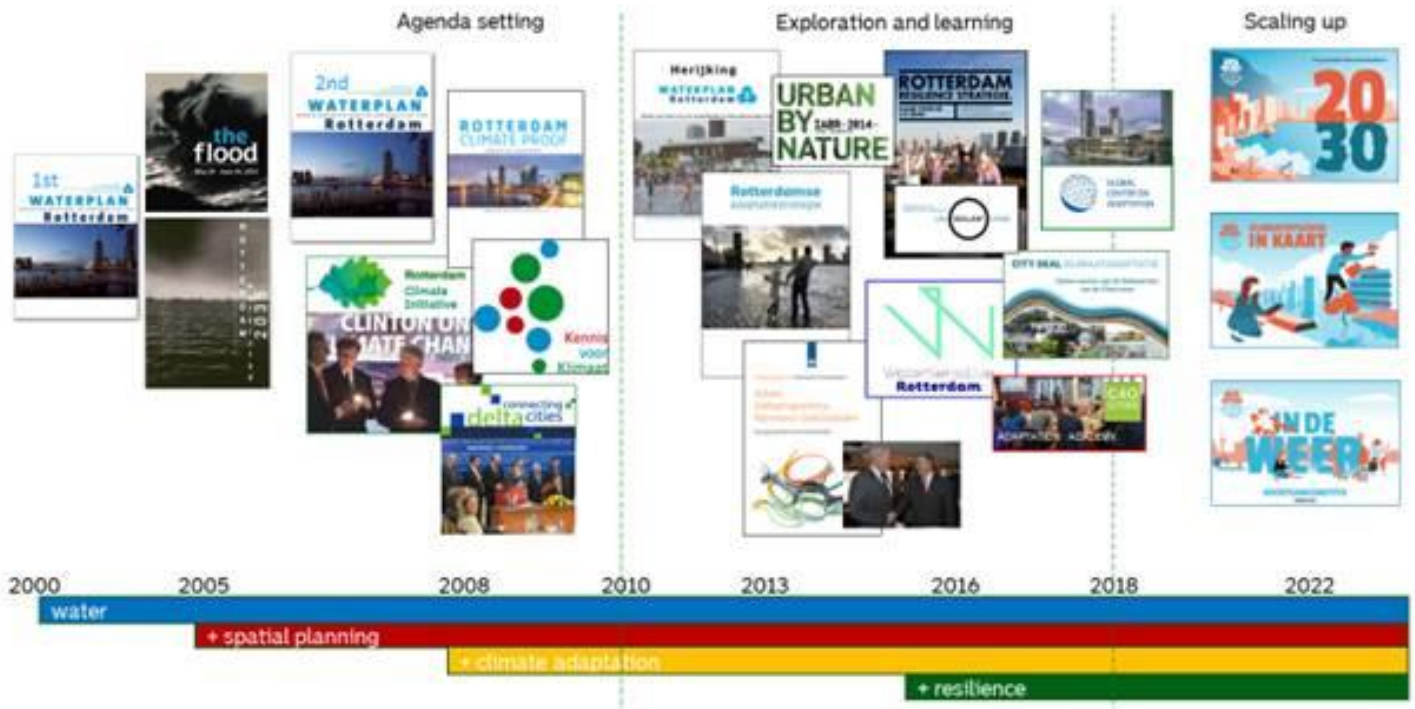
Rotterdam characteristics

Development process

Project examples

The road ahead

## Rotterdam's journey: learning takes time







**STATS & SPECS**

Date: 2013-2014

Client: City of Rotterdam, Wijkteam Schiedamschen- & Binnenrotte

Location: De Schiedamschen

Cost: €8 million

Surface Area: 100m<sup>2</sup> (5,500 sqm) water (includes entry/awning) / 100m<sup>2</sup> (5,500 sqm) water / 5,500 sqm water

Surface Category: 5,500 sqm water

The multi-use value of the square enabled costs to be distributed across departments. This helped reduce budget constraints.

Comparison of Potential contributions to the water square

€100,000	€100,000	€100,000	€100,000
City of Rotterdam	City of Rotterdam	City of Rotterdam	City of Rotterdam

DE URBANISTEN

Multifunctional public space: waterplaza

27

## Extending green: Rijnhaven – tidal/floating parc



### Rijnhaven 2022



Largest floating office: Global Centre on Adaptation

### Rijnhaven 2025/2026

2,000 -2,500 homes, facilities, catering, industry and 21 ha of park – floating and new traditional park

